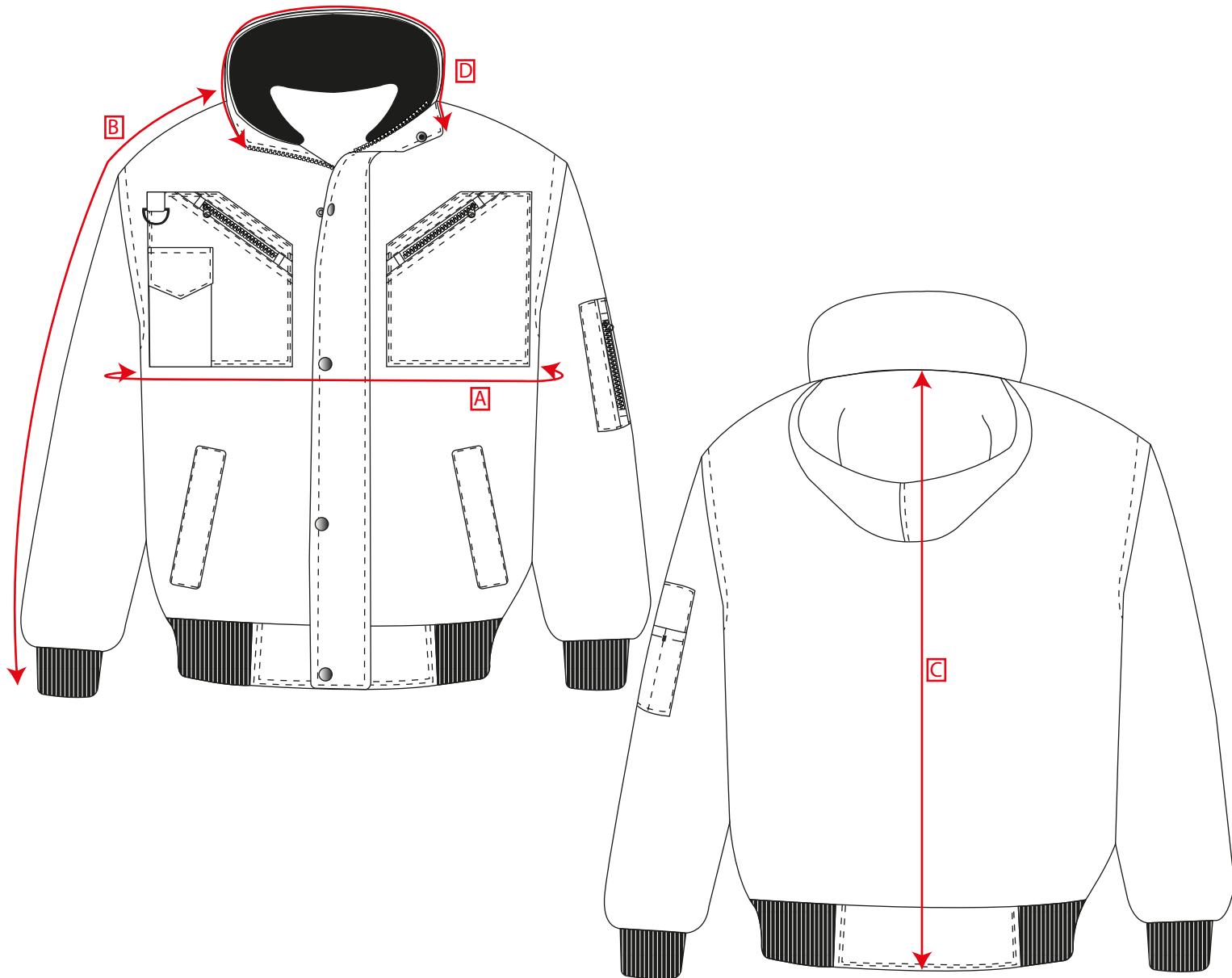


# PORTWEST®

STYLE NO: **F465**

DESCRIPTION: **3 in1 Bomber Jacket**



## Measurements

		S	M	L	XL	XXL	3XL	Tol
To Fit Chest		92-96	100-104	108-112	116-124	124-132	136-144	
Jacket Chest	A	118	126	134	142	150	158	1
Collar to Cuff (incl. Cuff)	B	82	83	84	85	86	87	1
Centre Back Length (incl. Waistband)	C	72	74	74	76	76	76	1
Neck Circumference	D	60.4	61.9	63	64.3	65.6	66.9	1